



# GAT MONTHLY MEMBERSHIP PROGRESS REPORT

Results as of: 4/30/2023

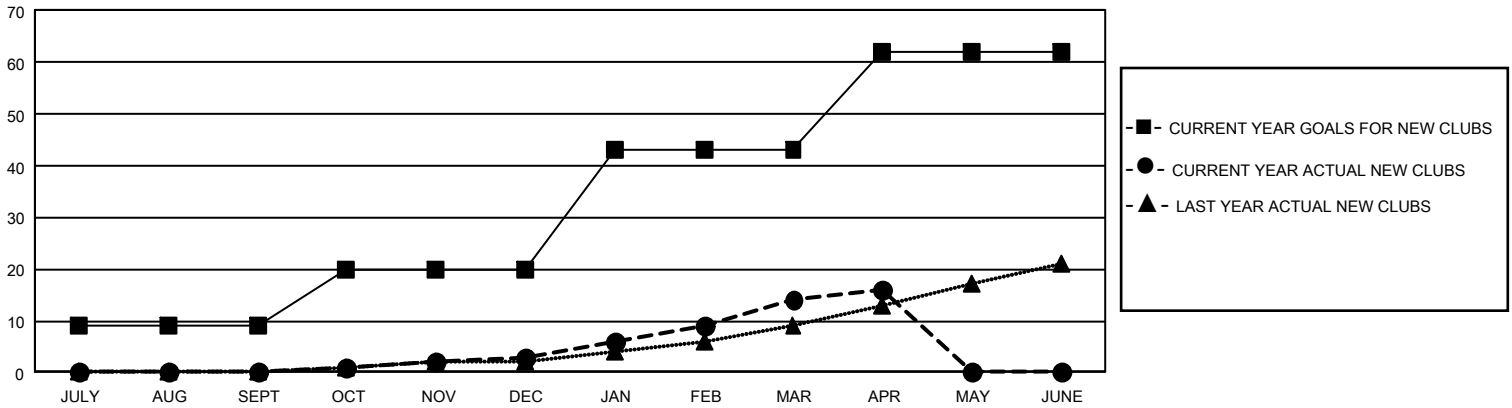
## GAT Constitutional Area 5 - Japan

REPORT DOES NOT INCLUDE CLUBS IN UNDISTRICTED AREAS.

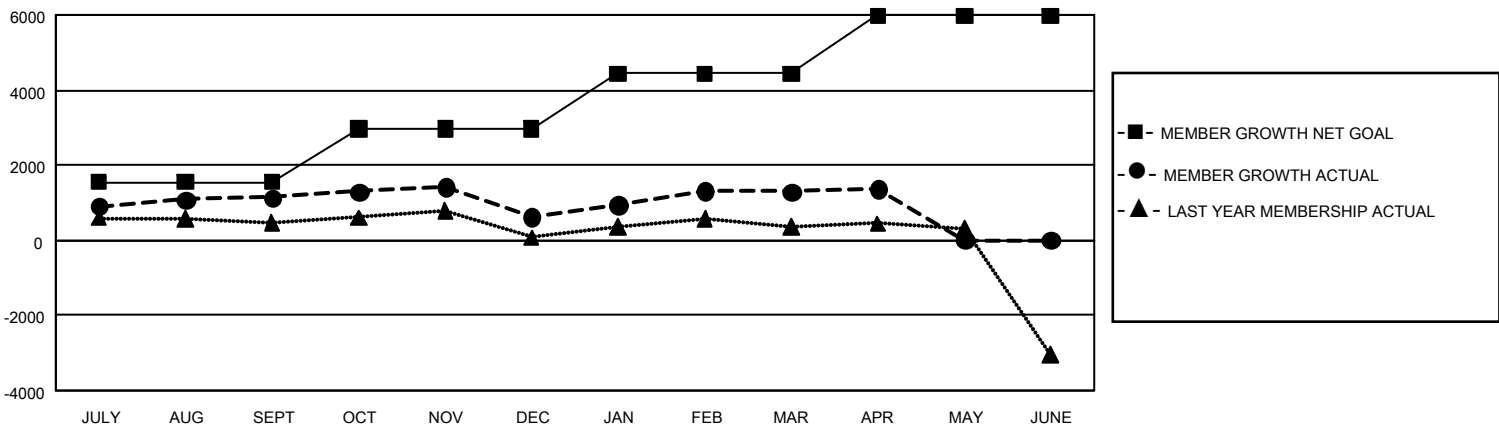
Clubs			
RESULTS FOR 2022-2023			
QUARTER	NEW CLUB GOAL	NEW CLUBS	DROPPED CLUBS
JULY/AUG/SEPT	27	0	5
OCT/NOV/DEC	33	3	5
JAN/FEB/MAR	69	11	3
APR/MAY/JUNE	57	2	0

Members			
RESULTS FOR 2022-2023			
QUARTER	MEMBER GROWTH NET GOAL	MEMBER GROWTH ACTUAL	DROPPED MEMBERS ACTUAL (including transfers)
JULY/AUG/SEPT	1540	2,714	1,429
OCT/NOV/DEC	1435	1,318	1,776
JAN/FEB/MAR	1461	2,078	1,313
APR/MAY/JUNE	1540	616	537

GOALS AND ACTUAL NEW CLUBS CUMULATIVE



GOALS AND ACTUAL MEMBERS CUMULATIVE



DROPPED CLUBS: 13	
<b>DROPPED MEMBERS</b>	
DECEASED	728
CLUB CANCELLED	18
OTHER	4,308
<b>TOTAL</b>	<b>5,054</b>

1,925 CLUBS OF 2,821 ADDED 1 OR MORE NEW MEMBERS

[CLICK HERE FOR CUMULATIVE MEMBERSHIP DATA](#)

GENDER DISTRIBUTION	
MALE	76,538 (76.35%)
FEMALE	23,694 (23.64%)
NON BINARY	0 (0.00%)
PREFER NOT TO ANSWER	8 (0.01%)
<b>TOTAL FAMILY UNIT MEMBERS</b>	<b>33,577</b>
<b>FAMILY MEMBERS PAYING HALF DUES</b>	<b>18,571</b>